

Your Window Onto
A Picture Perfect Landscape



Your Window Onto
A Picture Perfect Landscape









A Private Estate

Golf Ridge is a private estate set within 3.3-hectare that has unprecedented views of a lush landscape and a world-class golf course. Exploring the themes of escape and tranquility is the development's immersion in nature.

Come home and walk through tree-lined paths. Breathe in the aroma of the fresh green grass. Bask in your own exclusive paradise. All while being safe in a masterplanned community.

This is Golf Ridge Private Estate.
Your Window Onto A Picture Perfect Landscape.





Lush Landscapes, Privileged Views

Golf Ridge is the antidote to the stresses and strains of urban life with 75% of the total development dedicated to open spaces. Featuring century old trees, this nature-inspired community well integrates greens into its core proposition. Each home is designed to welcome the extended and borrowed landscape from the neighboring golf course, and in doing so offer unparalleled views.

Country Club Lifestyle

Experience the country club-like lifestyle in an exclusive neighborhood where indelible memories are created. Create a balanced life with features and amenities to help you rejuvenate, unwind, and enhance your personal health and well-being. Relax by the pool; spend quality time at the outdoor lounge; or just enjoy the spectacular views of the golf course.





Sophisticated Homes

Experience the country club-like lifestyle in an exclusive neighborhood where indelible memories are created. Create a balanced life with features and amenities to help you rejuvenate, unwind, and enhance your personal health and well-being. Relax by the pool; spend quality time at the outdoor lounge; or just enjoy the spectacular views of the golf course.

Classic Contemporary Architecture

Refreshing architecture creates an amazing sensory experience. Inherent to its modern design is the blurring of the boundaries between the units and the outdoors, bringing in abundant natural light, refreshing views, and better indoor air quality.



A Residential Masterpiece by FILIGREE

Filigree is dedicated to masterfully crafting top-end real estate with tangible value and highly functional design solutions. It deeply considers the lifestyles of the clientele in planning, implementing, constructing and delivering the properties. A unique balance of classical elegance and contemporary creativity is employed in the works of Filigree.

Golf Ridge embodies what makes a
Filigree home — one that embraces the
tranquility of exclusivity while being
connected to cosmopolitan Filinvest
Mimosa+ and beyond.



FULL INVEST
MIMOSA+



The Diversity and Connectivity of Filinvest Mimosa

Golf Ridge sits within a naturally secluded area of Filinvest Mimosa+, a mixed-use township within Clark, established worldwide economic center and weekend getaway haven in Central Luzon, Philippines.

Global connectivity is made effortless by the proximity of Clark International airport that lies 10 minutes away, whilst a state of the art transportation hub provides seamless connection to Manila in 3 hours, 15 minutes. An excellent road network further heightens an ease of movement for its residents from Clark, Luzon and beyond.

Envisioned to be a top-of-mind year-round business and leisure destination, Mimosa+ will be a vibrant and green central zone that is home to various industries namely office, hospitality, retail, residential, golf, and gaming.

Hyper Amenitized



The masterplan provides very generous open space ensuring experiential landscape with active and passive gardens. It features relaxed and seamless connection between towers yet ensures the privacy of a single detached home. Each tower has a dedicated drop off for ease of access and features century old trees, well integrating greens into the core proposition of this nature-inspired community.



Infinity & Kiddie Pool



Outdoor Lounge



Aerial view of a lush green landscape with a winding road and palm trees. The scene is dark, suggesting dusk or dawn, with a golden glow in the top left corner.

Building Features

CONVENIENCE AND SERVICES

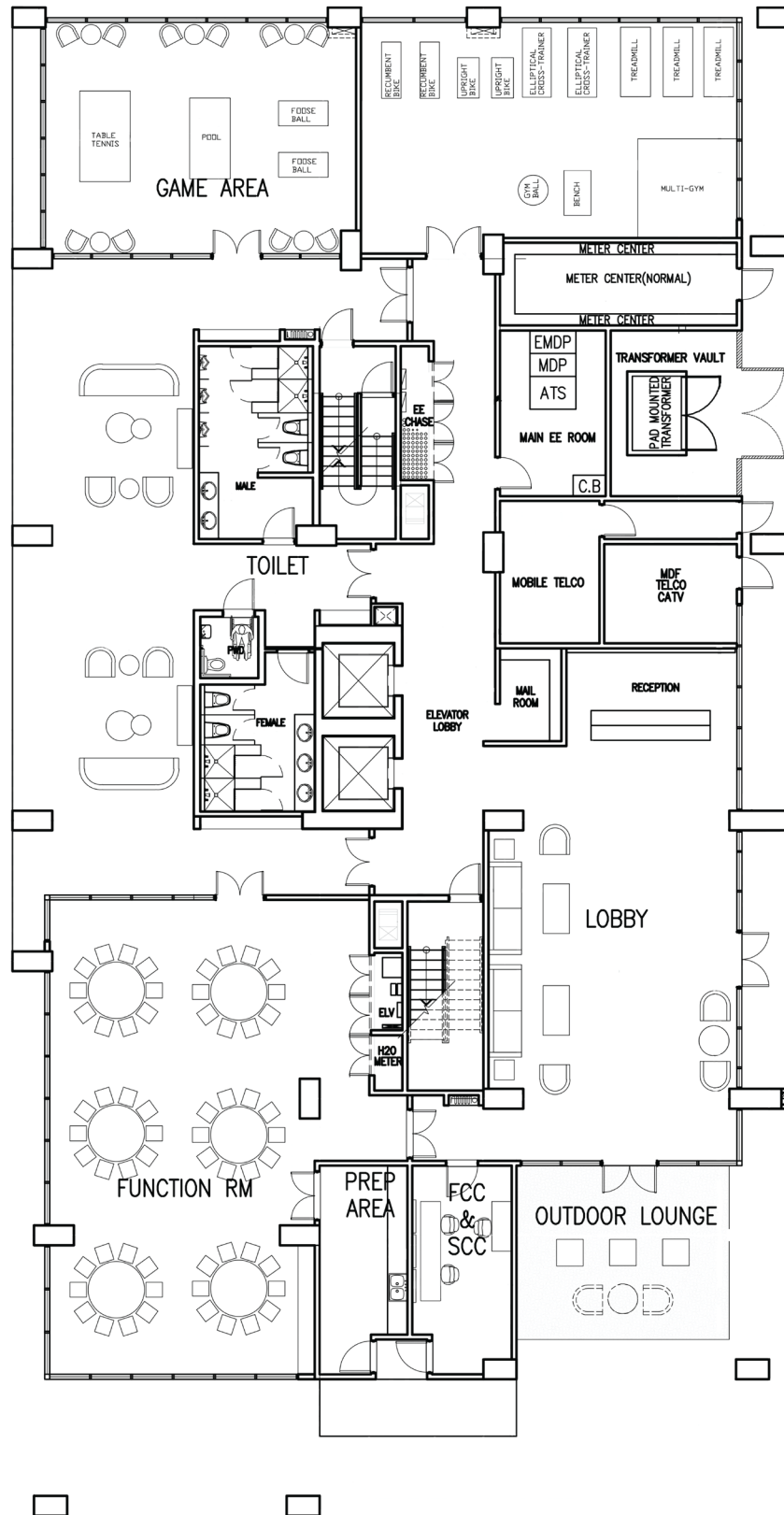
- Airconditioned exclusive lobby
- Centralized mailroom
- Property management office
- Two (2) high speed passenger elevators
- Private drop-off

SAFETY AND SECURITY

- 24-hr security center
- 100% emergency power backup
- Fire detection and alarm system
- Elevator key-card access
- Integrated CCTV security system in the common areas



Ground Floor Layout





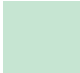



Exclusive Lobby

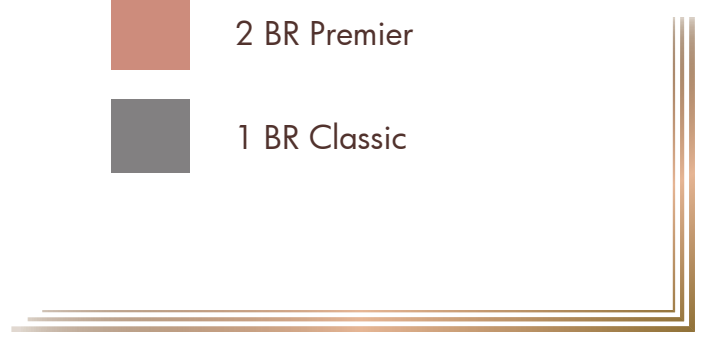


Typical Floor Layout

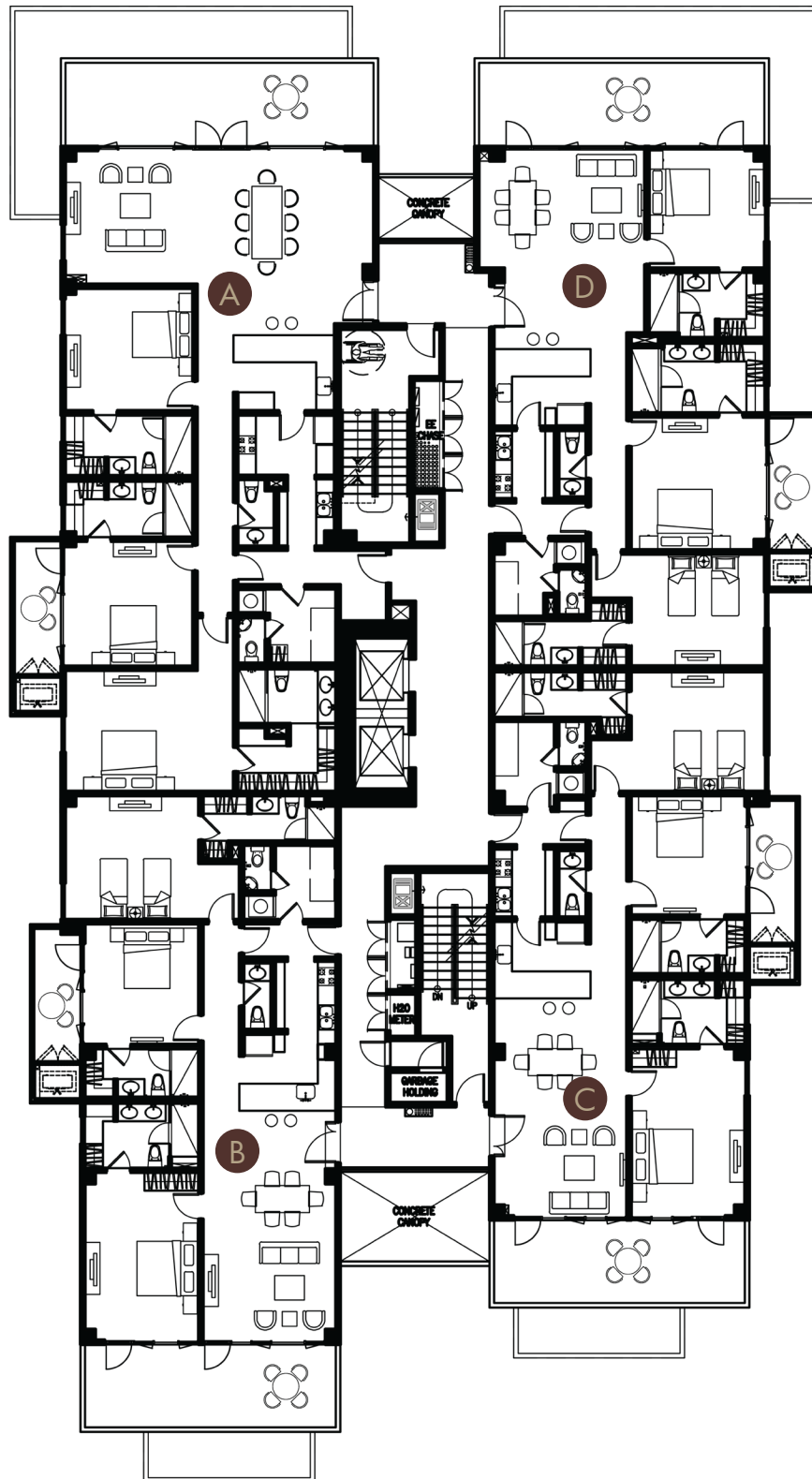


LEGEND:

- | | | | |
|---|--------------------|---|--------------|
|  | 3 BR Fairway Suite |  | 2 BR Premier |
|  | 2 BR Classic |  | 1 BR Classic |



Penthouse Floor Layout

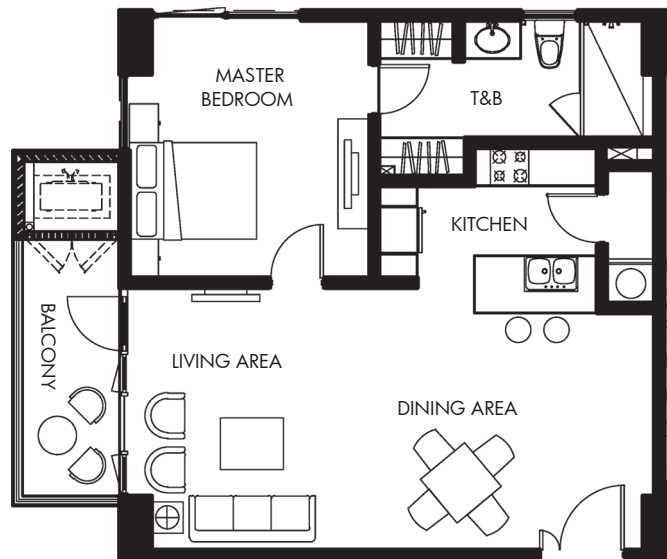




The Units

All units are generously sized and thoughtfully designed. Each has amply sized balcony with great views of the golf course and town center.

1 BR CLASSIC



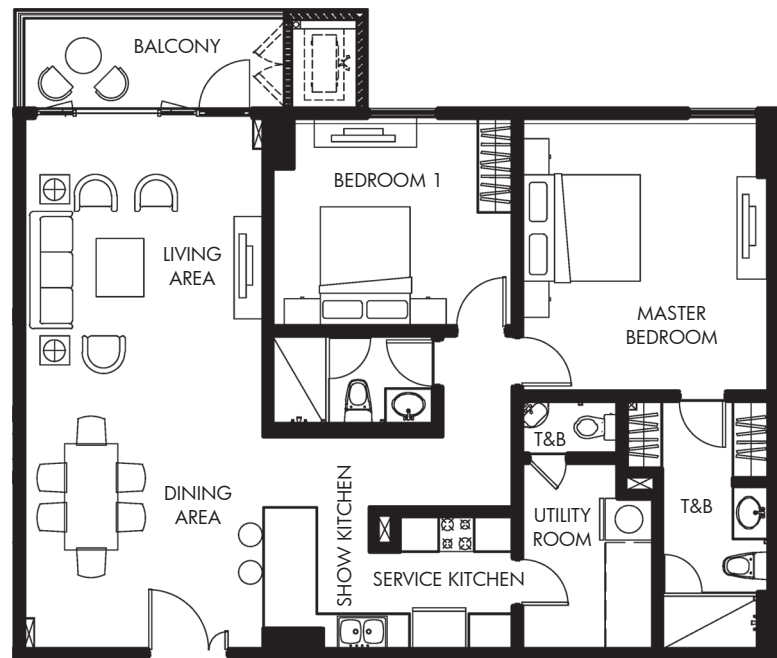
This classic unit that accentuates the exquisite interior details of sophisticated living in efficient spaces.

UNIT AREA: 82 - 83 sqm

SPACE SPECIFICATIONS:

- Dining Area
- Living Area
- Master Bedroom with Toilet & Bath
- Kitchen
- Balcony

2 BR CLASSIC



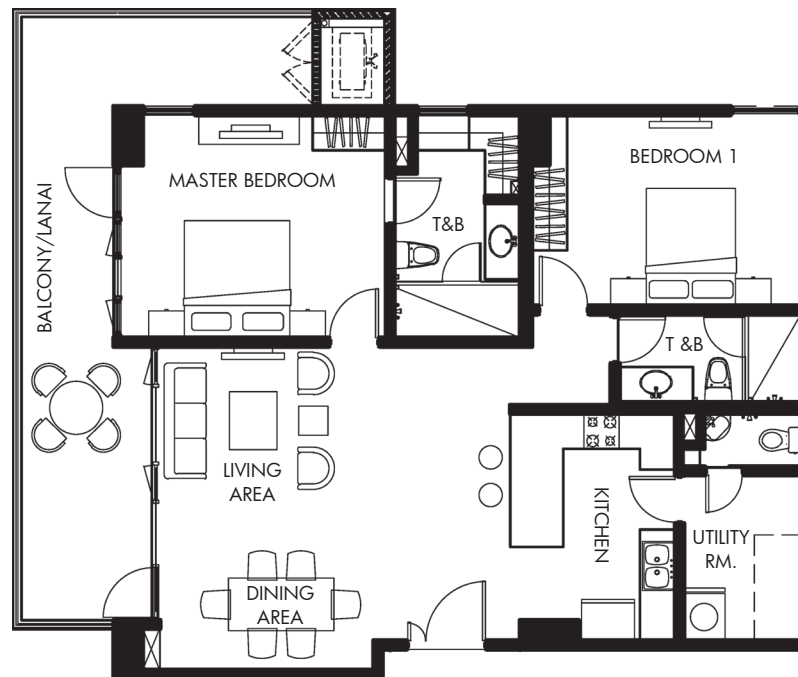
This Two Bedroom unit combines timeless sensibility and luxury living through complementing natural lighting and functional space planning.

UNIT AREA: 128 - 131 sqm

SPACE SPECIFICATIONS:

- Dining Area
- Living Area
- Bedroom 1
- Common Toilet & Bath
- Master Bedroom with Toilet & Bath
- Utility Room with Toilet & Bath
- Service Kitchen
- Show Kitchen
- Balcony

2 BR PREMIER



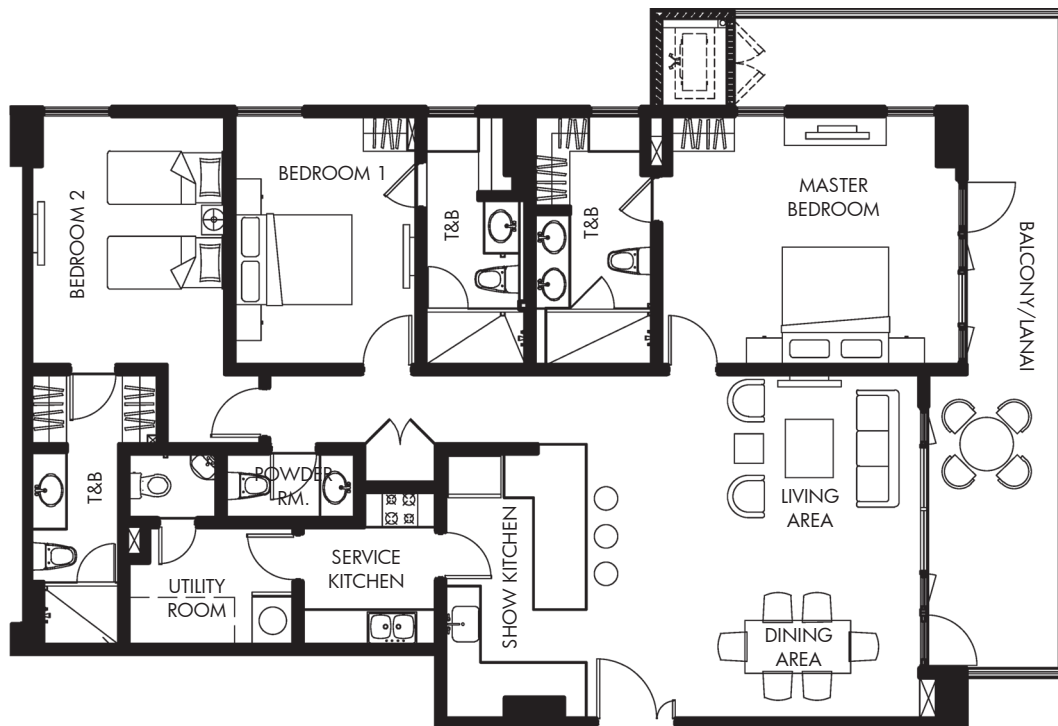
The Two Bedroom Premier is a private haven enhanced by grandiose nature and vivid skies that bring tranquility to the unit.

UNIT AREA: 139 sqm

SPACE SPECIFICATIONS:

- Dining Area
- Living Area
- Master Bedroom with Toilet & Bath
- Bedroom 1
- Common Toilet & Bath
- Utility Room with Toilet & Bath
- Kitchen
- Balcony/Lanai

3 BR FAIRWAY SUITE



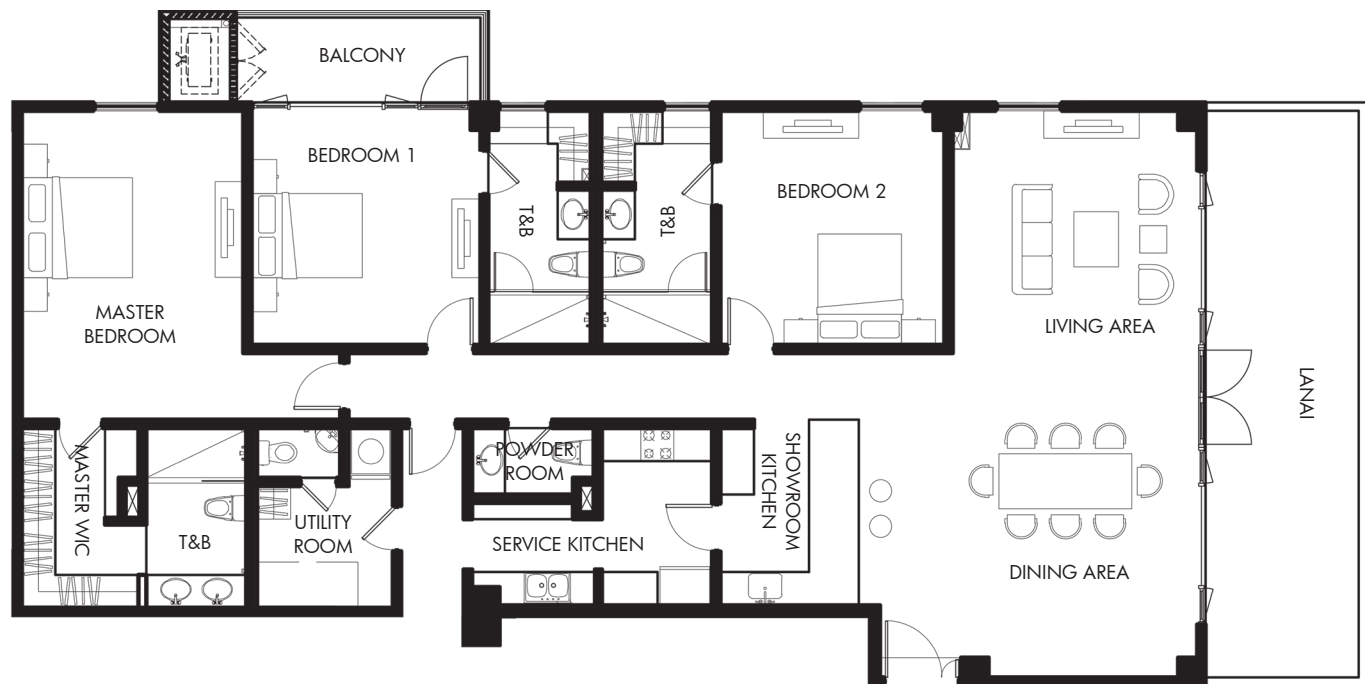
The Three Bedroom Fairway Suites are uniquely designed with an L-shaped veranda that embraces a breathtaking view of the world-class Mimosa golf course and a boundless foliage.

UNIT AREA: 187 sqm

SPACE SPECIFICATIONS:

- Dining Area
- Living Area
- Master Bedroom with Toilet & Bath
- Bedroom 1 with Toilet & Bath
- Bedroom 2 with Toilet & Bath
- Utility Room with Toilet & Bath
- Powder Room
- Service Kitchen
- Show Kitchen
- Balcony/Lanai

3 BR PENTHOUSE SUITE



The Three Bedroom Penthouse Suites are exclusive units situated at the topmost floor with spacious living areas that extend to a dual view of sculpted and borrowed landscapes, a definite upscale unit.

UNIT AREA: 195 - 249 sqm

SPACE SPECIFICATIONS:

- Dining Area
- Living Area
- Bedroom 2 with Toilet & Bath
- Bedroom 1 with Toilet & Bath
- Master Bedroom with Walk-In-Closet and Toilet & Bath
- Utility Room
- Powder Room
- Service Kitchen
- Show Kitchen
- Balcony
- Lanai





Refined Details

BEDROOM

With built-in closets

KITCHEN

Modular kitchen base and overhead cabinets
Quartzstone countertop
Rangehood
Stainless steel sink & faucet with grease trap

TOILET AND BATH

Rain shower and faucet
Shower glass enclosure
Water closet complete with seat and cover & bidet
Quartzstone lavatory counter

FIXTURES

Energy efficient multi-split type AC
Audio entry phone connected to the reception area

PROVISIONS

FFTH cable/internet/telephone ports in all rooms
Multi-point water system for toilet & bath
Washer/dryer

FLOOR

Homogeneous tiles
(Except for utility / maid's room)

WALL

Painted finish
(Bedroom/s and Living Areas)
Homogeneous tiles
(Shower area)

CEILING

Painted finish
(Bedroom/s and Living Areas)
Painted moisture-resistant gypsum board
(Toilet & Bath and Kitchen)

WINDOWS

Operable glass windows and aluminum powder coated frame with tinted glass

DOORS

Solid wood with door viewer
(Main Door)

BALCONY

Painted steel railing



An aerial photograph of a golf course, featuring a large, irregularly shaped pond in the center. A concrete bridge with a metal railing spans across the lower portion of the pond. The surrounding landscape is lush with green grass and scattered trees. The entire image is overlaid with a dark, semi-transparent green filter. In the top-left corner, there is a decorative graphic consisting of three parallel, thin lines forming an L-shape.

The Team

Filigree works with consultants and designers who are intent on preserving the environment through the adoption of sustainable practices.

ARCHITECTURE

Leandro V. Locsin Partners

LANDSCAPE

AECOM Singapore Pte Ltd.

STRUCTURAL

Alcantara, Ubay & Co Inc.

MEPFPS

Guevara & Partners Inc.

INTERIOR DESIGN

Budji+Royal Design Architects



The keys to your
private estate await you.



www.golfridge.com.ph

GOLF RIDGE
PRIVATE ESTATE

AT FILINVEST
MIMOSA+ CLARK

FILIGREE